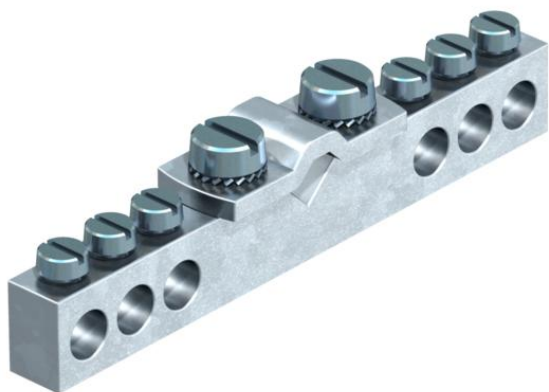


# Technical data sheet

## Equipotential bonding bar for bathroom

Item number: 5015553



- Nickel-plated brass contact strip
- Screws and clamp made of electrogalvanised steel

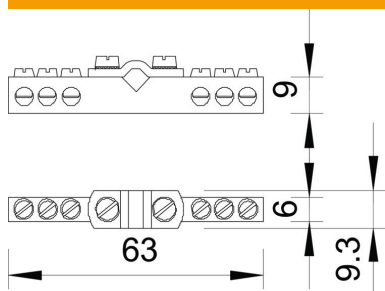
- Connection options:
- 6 cables 1.5-10 mm<sup>2</sup>
  - 1 cable 6-16 mm<sup>2</sup>

**CuZn**  
37 Brass

### Master data

Item number	5015553
Type	1804
Description 1	Equipotential bonding rail
Description 2	for bathroom
Manufacturer	OBO
Dimension	409
Material	Brass
Smallest sales unit	5
Unit of quantity	Units
Weight	2,963 kg
Weight unit	kg/100 pairs

### Dimensions



Length	63 mm
Width	9,3 mm
Height	9 mm

# Technical data sheet

## Equipotential bonding bar for bathroom

Item number: 5015553



### Technical specifications

Quantity of flat conductor connections up to 30 mm	0
Quantity of flat conductor connections up to 40 mm	0
Quantity of cable connections up to 16 mm <sup>2</sup> , rigid	1
Quantity of cable connections up to 25 mm <sup>2</sup> , rigid	0
Quantity of cable connections up to 6 mm <sup>2</sup> , rigid	6
Quantity of cable connections up to 95 mm <sup>2</sup> , rigid	0
Quantity of round conductor connections 10 mm	0
Quantity of round conductor connections 8 mm	0
Quantity of round conductor connections 8-10 mm	0
Quantity of round conductor connections, total	7
Version for	Without cover hood
Type	Fixed structure
Insulator	no
Surface of the terminal	Electrogalvanised
Surface of the contact rail	Nickel-plated
Material of the terminal	Steel
Material of the contact rail	Brass