

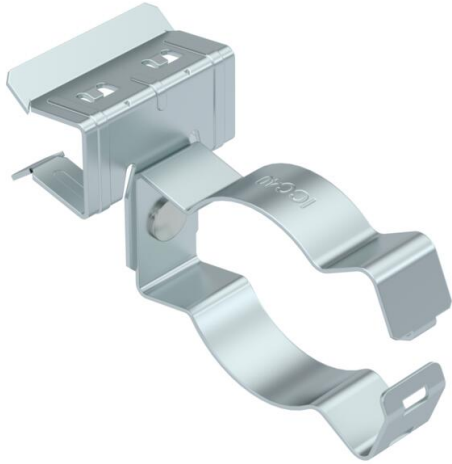
Technical data sheet

Support clamp, with pipe seat at side

Item number: 1488377



Support clamp for mounting pipes. Closed pipe seat at side. Fastening through knocking onto steel girders.



CE

St	Steel
ZL	Zinc slat

Master data

Item number	1488377
Type	SCHPC 15-20 D40
Description 1	Beam clamp
Description 2	with pipe clamp 36-40 mm
Manufacturer	OBO
Dimension	15-20mm
Material	Steel
Surface	Zinc slat
Surface standard	
Smallest sales unit	50
Unit of quantity	Piece
Weight	5.6 kg
Weight unit	kg/100 pc.

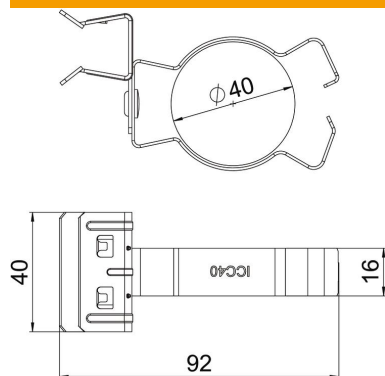
Technical data sheet

Support clamp, with pipe seat at side

Item number: 1488377



Dimensions



Length	94 mm
Width	40 mm
Height	54 mm
Dimension L	92 mm
Maß W	40 mm

Technical data

Connection type/component	Pipe/cable
Fastening type	Clamp
Flange thickness F max.	20 mm
Flange thickness F min.	15 mm
Pipe/cable diameter, max.	40 mm
Pipe/cable diameter, min.	36 mm
Hinge, adjustable	no
Hinged	no