

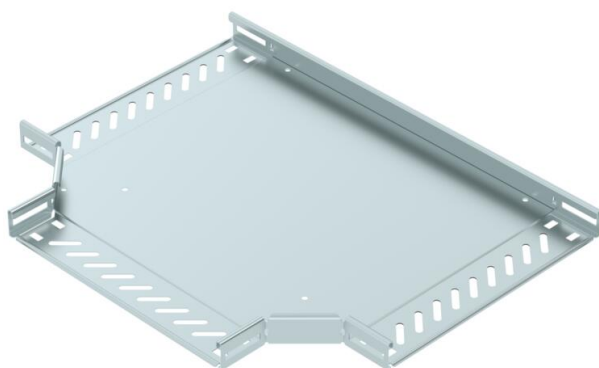
# Technical data sheet

## T piece 35 FS

Item number: 6038004



T piece for the creation of a horizontal branch, fitting for lock and screw-on cable trays of side height 35 mm. Screw connection with FRS truss-head screws and M6 combination nuts. Can be used in indoor areas. Fastening material must be ordered separately.



**St** Steel

**FS** Strip galvanized

### Master data

|                     |                            |
|---------------------|----------------------------|
| Item number         | 6038004                    |
| Type                | RT 330 FS                  |
| Description 1       | T piece                    |
| Description 2       | for cable tray, horizontal |
| Manufacturer        | OBO                        |
| Dimension           | 35x300                     |
| Material            | Steel                      |
| Surface             | Strip galvanized           |
| Surface standard    | DIN EN 10346               |
| Smallest sales unit | 1                          |
| Unit of quantity    | Piece                      |
| Weight              | 186.3 kg                   |
| Weight unit         | kg/100 pc.                 |

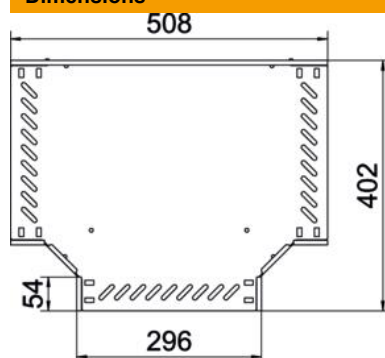
# Technical data sheet

## T piece 35 FS

Item number: 6038004



### Dimensions



|                 |        |
|-----------------|--------|
| Width           | 300 mm |
| Height          | 35 mm  |
| Plate thickness | 1 mm   |
| Dimension B     | 300 mm |

### Technical data

|   |                      |
|---|----------------------|
| Connector version                       | Integrated connector |
| Maintain electrical functions           | no                   |
| NATO hole pattern                       | no                   |
| Rustproof steel, pickled                | no                   |
| Permitted temperature range, max.       | 120 °C               |
| Permitted temperature range, min.       | -20 °C               |
| Wide-span version                       | no                   |
| Type of connector, cable support system | Screwed              |
| Recommended quantity of bolts           | 15 St.               |
| Rail thickness                          | 1.25 mm              |