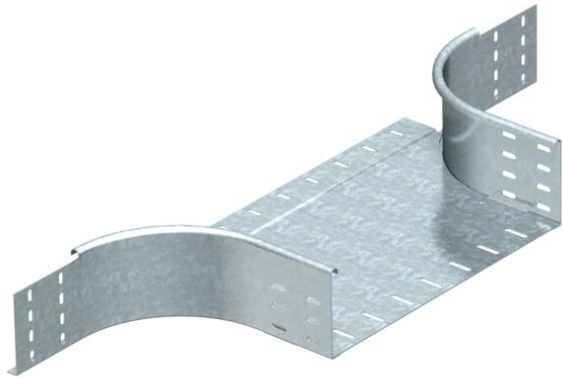


# Technical data sheet

## Add-on tee 110 FT SOMY

Item number: 7196178



Add-on tee for horizontal and vertical use. For all cable tray types of 110 mm side height.  
Fitting in round design. The interior radius of the fitting is 150 mm. Fastening materials should be ordered separately.



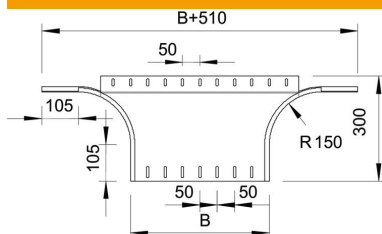
**St** Steel

**FT SO** Hot-dip galvanised 85 µm

### Master data

Item number	7196178
Type	RAA 160 FT SO
Description 1	Add-on tee
Description 2	round version
Manufacturer	OBO
Dimension	110x600
Material	Steel
Surface	Hot-dip galvanised 85 µm
Surface standard	DIN EN ISO 1461
Smallest sales unit	1
Unit of quantity	Piece
Weight	337 kg
Weight unit	kg/100 pc.

### Dimensions



Width	600 mm
Height	110 mm
Dimension B	600 mm

# Technical data sheet

Add-on tee 110 FT SOMY

Item number: 7196178



## Technical data

Bend (angle)	90°
Change of direction	Horizontal
Type of connector, cable support system	Screwed